

AVIGILON™



Unity Outdoor H6 Mini Dome

2 MP

5 MP

Small yet mighty, and now tough enough for the outdoors, the outdoor H6 Mini Dome camera from Avigilon Unity improves your building's physical security with the perfect fusion of form and function. Get complete visibility day or night with high-resolution images of up to 5 MP, a wide field of view and built-in IR illumination in a low-profile design.



AI-powered Video Analytics

Stay on top of what's happening at your site with built-in video analytics to alert you on unusual activity and potentially critical events.



Facial Recognition support

Identify people of interest on your secure watch list(s). Assistive facial recognition can help equip you with the context for potentially critical events, so you can act faster.



24/7 Visibility

Get incredible image detail and situational awareness with 2 to 5 MP resolutions and a wide field of view, plus visibility in low-light areas with built-in IR illumination.



Appearance Search support

Locate people or vehicles of interest in seconds by entering physical descriptions, uploading a photo, or by finding an example within recorded video.



Durable design

Secure outdoor areas with a weather and vandal-proof design that is rated IK10 and IP66/67, making them tough for the elements, but easy on the wallets.



Secure and Compliant

Trust that your data is well-protected with advanced cybersecurity features such as an onboard FIPS 140-3 Level 3 compliant TPM.

Specifications

Image Performance			2.0 MP	5.0 MP
Image Sensor			1/2.8" progressive scan CMOS	
Imaging Area (H × V)			4.8 mm × 2.7 mm; 0.189" × 0.106"	5.18 mm × 3.89 mm; 0.204" × 0.153"
Max Image Rate	Full feature mode		(50/60 Hz): 25/30 fps	(50/60 Hz): 25/24 fps
				(50/60 Hz) - 25/30 fps
Max Re- solution	Primary	4:3	N/A	2592 x 1944 2048 x 1536
		16:9	1920 x 1080	2560 x 1440 1920 x 1080
	Secondary	4:3	N/A	720 x 536 640 x 480 512 x 384 384 x 288
	Secondary	16:9	720 x 480 640 x 360 512 x 288 384 x 216	720 x 480 640 x 360 512 x 288 384 x 216
Dynamic Range	WDR Off		83 dB	
	WDR On		Up to 120dB	
Camera Operating Mode			Full Feature / No Video Analytics	Full Feature / No Video Analytics / High Framerate (Video Analytics disabled)
Bandwidth Management			HDSM SmartCodec technology; Idle scene mode	
3D Noise Reduction Filter			Yes	

Lens and IR Illumination			2.0 MP	5.0 MP
Lens			2.99 mm	
IR illumination (high power 850 nm LEDs)			Up to 20 m	
Minimum Illumination	With IR		0 lux in color or monochrome mode	
	Without IR		0.005 lux in monochrome mode; 0.01 lux in color mode	0.01 lux in monochrome mode; 0.02 lux in color mode

Lens and IR Illumination	2.0 MP	5.0 MP
Angle of View (HFOV x VFOV)	(16:9) 108° x 61°	(4:3) 101° x 75°, (16:9) 100° x 54°
Max Aperture	F2.0	

Image Control	
Image Compression Method	H.264 HDSM SmartCodec, H.265 HDSM SmartCodec, Motion JPEG
Streaming	Multi-stream H.264, Multi-stream H.265, Motion JPEG
Motion Detection	Pixel motion: Selectable sensitivity and threshold. Classified object detection
Tamper Detection	Yes
Electronic Shutter Control	Automatic, Manual (1/7.5 to 1/30000 sec)
Iris Control	Fixed
Day/Night Control	Automatic, Manual
Flicker Control	50 Hz, 60 Hz
White Balance	Automatic, Manual
Backlight Compensation	Adjustable
Privacy Zones	Up to 64 zones

Network	
Network	100BASE-TX
Cabling Type	CAT5
Connector	RJ-45
ONVIF	ONVIF® compliance Profile S, Profile T, ProfileM and Profile G (www.onvif.org)
Security	Password protection, HTTPS encryption, digest authentication, WS authentication, user access log, 802.1x port based authentication, FIPS 140-3 L3 (with onboard TPM)
Protocols	IPv6, IPv4, HTTP, HTTPS, SOAP, DNS, NTP, RTSP, RTCP, RTP, TCP, UDP, IGMP, ICMP, DHCP, Zeroconf, ARP, HSTS
Streaming Protocols	RTP/UDP, RTP/UDP multicast, RTP/RTSP/TCP, RTP/RTSP/HTTP/TCP, RTP/RTSP/HTTPS/TCP, HTTP
Device Management Protocols	SNMP v2c, SNMP v3

Mechanical		Surface Mount	Pendant Mount
Dimensions (LxWxH)	Camera assembly	106mm x 106mm x 81mm	121mm x 121mm x 146mm
	Accessory Only	NA	121mm x 121mm x 89mm

Mechanical	Surface Mount	Pendant Mount
Weight (camera only)	420gram Camera (685gram in box)	229gram (335gr in box; 614gr Camera)
Max. Ceiling Thickness	N/A	N/A
Dome Bubble	Polycarbonate	
Body	Polycarbonate and aluminum	
Housing	Surface mount	Pendant mount
Finish	Plastic Injector Mold Black; Powdercoat Grey	

Electrical	
Power Consumption	10 W
Power Source	PoE: IEEE 802.3af Class 3 compliant
IR Illuminator Behavior	IR illuminator will turn off if the temperature is 58 °C (136 °F) or higher. The illuminator will operate at 70% power if the temperature is between 35°C (95 °F) and 58°C (136 °F).
Power Connector	N/A
RTC Backup Battery	3V manganese lithium

Environmental	
Operating Temperature	-20°C to +60 °C (-4 °F to 140 °F)
Boot Temperature	-20°C to +60 °C (-4 °F to 140 °F)
Storage Temperature	-10 °C to +60 °C (14 °F to 140 °F)
Humidity	0 - 95% non-condensing
Environment	Outdoor Applications

Certifications	
Certifications/Directives	UL, cUL, CE, ROHS, RCM, UKCA, NOM, KC, BIS
Safety	UL 62368-1, CSA 62368-1, IEC/EN 62368-1, IEC 62471
Environmental	IEC 60529 IP66, IP67, IEC/EN 62262 IK10
Electromagnetic Emissions	FCC Part 15 Subpart B Class B, IC ICES-003 Class B, EN 55032 Class B, EN 61000-6-3, EN 61000-3-2, EN 61000-3-3
Electromagnetic Immunity	EN 55035, EN 61000-6-1

Analytics Specifications

Supported Analytics Events	
Objects in Area	The event is triggered when the selected object type moves into the region of interest.
Object Loitering	The event is triggered when the selected object type moves into the region of interest and then stays for an extended amount of time.
Objects Crossing Beam	The event is triggered when the specified number of objects have crossed the directional beam that is configured over the camera's field of view. The beam can be unidirectional or bidirectional.
Object Appears or Enters Area	The event is triggered by each object that enters the region of interest. This event can be used to count objects.
Object Not Present in Area	The event is triggered when no objects are present in the region of interest.
Objects Enter Area	The event is triggered when the specified number of objects have entered the region of interest.
Objects Leave Area	The event is triggered when the specified number of objects have left the region of interest.
Object Stops in Area	The event is triggered when an object moves into a region of interest and then stops moving for the specified threshold time.
Object Too Close	The event is triggered when two objects are too close together, based on the specified distance set for the event.
Direction Violated	The event is triggered when an object moves in the prohibited direction of travel.
Tamper Detection	The event is triggered when the scene unexpectedly changes.

Supported Classified Object Types	
Object Types in Outdoor Mode	Vehicle, sub-types: Car, Truck, Bicycle, Motorcycle, Bus Person
Object Types in Indoor Mode	Person

Teach by Example	
Teach By Example	Yes, when used with Avigilon Control Center™

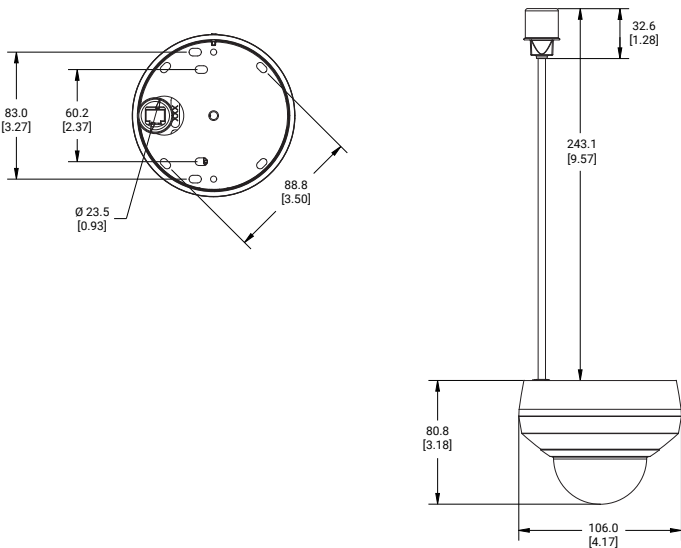
Avigilon Control Center (ACC) Versions Supported Features*	
ACC Enterprise Edition Version 6.14.12 or higher	All supported analytic events with two types of classified objects: person or vehicle.
ACC Enterprise Edition Version 7.2 or higher	All supported analytic events with people and vehicles and all vehicle sub-types as classified objects.

*Analytic capabilities on the H6 Mini Dome Camera include Unusual Activity Detection, Classified Object Detection and Advanced Analytic Event configurations (e.g. Objects in Area).

*Analytics capabilities, including detection range, may vary by camera line. Consult the Avigilon Self-Learning Video Analytics Design Guide for details specific to the H6 Mini Dome Camera.

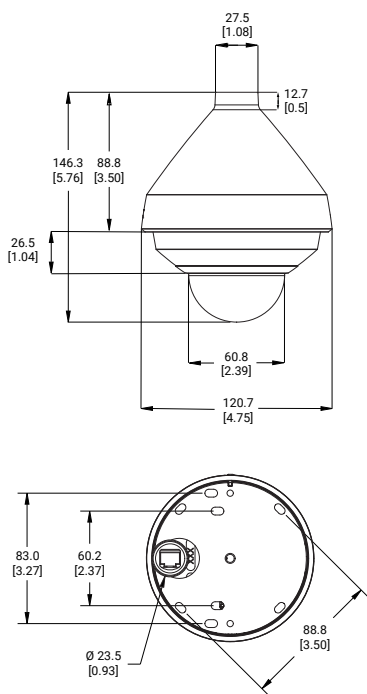
Outline Dimensions

Surface Mount



[X.XX]	INCHES
X.X	MM

Pendant Mount



[X.XX]	INCHES
X.X	MM

Ordering Information

Part Number	MP	Analytics	IP66/IP67/IK10	HDSM Smartcodec
2.0C-H6M-DO1-IR	2.0	✓	✓	✓
5.0C-H6M-DO1-IR	5.0	✓	✓	✓

Part Number	Description
H6M-MT-NPTA2	NPT Pendant Cap 0.5", H6M Outdoor
MSI-NPTCON-1001	NPT Adapter 0.5", to 1.5" NPT
MSI-LD-1E	Clear bubble replacement
MSI-LD-0E	Tinted bubble replacement (50% tint)
MSI-MT-ECLR	Exit Collar, Side Conduit
WLMT-1021	Wall Mount -20cm Arm, NPT 1.5"

Support

For product support, visit: avigilon.com or sales@avigilon.com

To learn more, visit: avigilon.com/h6m



MOTOROLA SOLUTIONS

AVIGILON[™]

Motorola Solutions, Inc. 500 West Monroe Street, Chicago, IL 60661 U.S.A. motorolasolutions.com

© 2025, Avigilon Corporation. All rights reserved. MOTOROLA, MOTO, MOTOROLA SOLUTIONS and the Stylized M Logo are trademarks or registered trademarks of Motorola Trademark Holdings, LLC and are used under license. All other trademarks are the property of their respective owners.

20250730-en Rev 2